

Quick-Start Guide for Windows Mobile – Intermec CN3

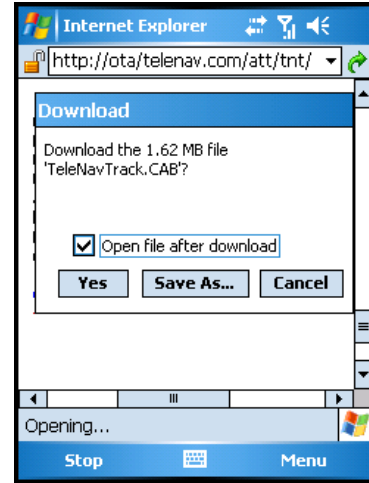
This Quick-Start Guide gives you instructions for installing the TeleNav Track application. You may need to go through the Troubleshooting procedures to make sure TeleNav Track runs smoothly. Use the instructions below to walk yourself through the downloading steps.

Installing TeleNav Track v3.2

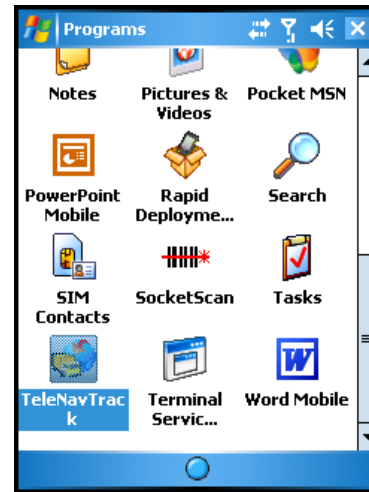
TeleNav Track can be installed directly onto your Pocket PC.

1. Open an Internet Explorer browser and install TeleNav Track from the OTA link: <http://ota.telenav.com/att/tnt/>

NOTE: Do not unselect the checkbox in the Download dialog that says “Open file after download” because TeleNav Track will not be installed if this checkbox does not remain checked. The speed of the download varies with your connection, but usually the download takes between 1-4 minutes.



2. After the installation, TeleNav Track can be launched on the device.



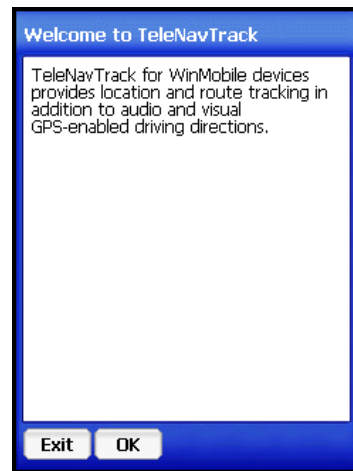
Quick-Start Guide for Windows Mobile – Intermec CN3

First Launch Procedures

1. The splash screen appears when you launch TeleNav.

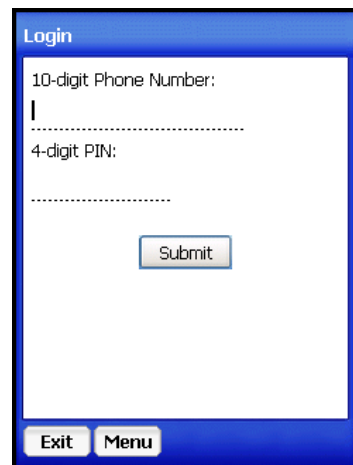


2. Read the terms and conditions on the Welcome, Requirements, and Terms of Use screens. Click **OK** if you agree to continue.



3. You will next come to the login screen. Enter your 10-digit phone number and 4-digit PIN number.

NOTE: By default, the PIN is the last 4 digits of your phone number. After you have successfully logged in to TeleNav Track for the first time, only the Splash Screen will present itself for subsequent logins.



Quick-Start Guide for Windows Mobile – Intermec CN3

4. The TeleNav Track Main Menu appears. Make a selection from the options.

